

Overview

GeoDecisions MapLaunch provides user-friendly and affordable municipal Web sites that display property, recreation, and economic development information. MapLaunch, GeoDecisions' multi-platform framework for building spatial Web applications, is designed to meet the needs of counties, regional planning organizations, and municipalities.

MapLaunch contains components common to most spatial Web applications, such as feature-rich map display components and navigation, query, and printing tools. The solution is cross browser-compatible and is made up of JavaScript format files. This feature makes the platform independent, allowing the solution to be used with any type of Web server or mobile device. It is designed to take advantage of the speed, flexibility, and ease of use of ArcGIS® Server and utilize ArcGIS Online.

The main screen is divided into these areas:

- A toolbar that provides links to customize the map (such as adjusting layer transparencies, identifying map features, or printing a map); a link to additional map tools; and a link to this help file.
- The map interface that displays the current map and provides mapping tools to zoom the map extents or display street map or aerial views.

Toolbar


The toolbar contains links to customize the map layers, search for a specific **parcel/street or address**, identify map features, measure distances on the map, print a map, access map tools, and access online help.

Searching

The search tool enables you to locate geographic areas such as land parcels, municipalities, or other available data and zoom to that location on the map.

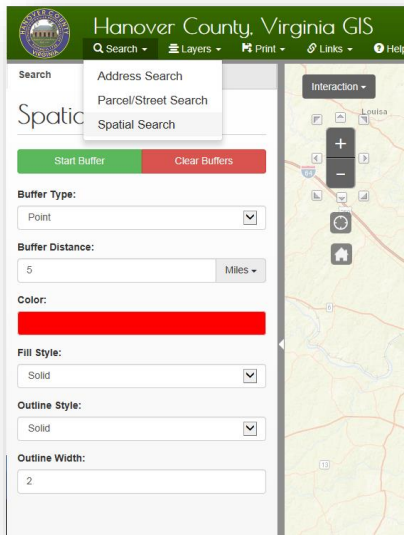
Note: If you are unsure of specific information to search, simply leave the fields blank and click the Search button to display a list of all the areas available within your data.

To search for geographic areas:

1. Select **Search** from the toolbar. The Search widget displays.
3. Enter as much search criteria as possible.
4. Click **Search**.  The search results display in the widget.
5. Click on a search result to zoom to that parcel on the map. The map zooms to the location and highlights the extents of the selected parcel.

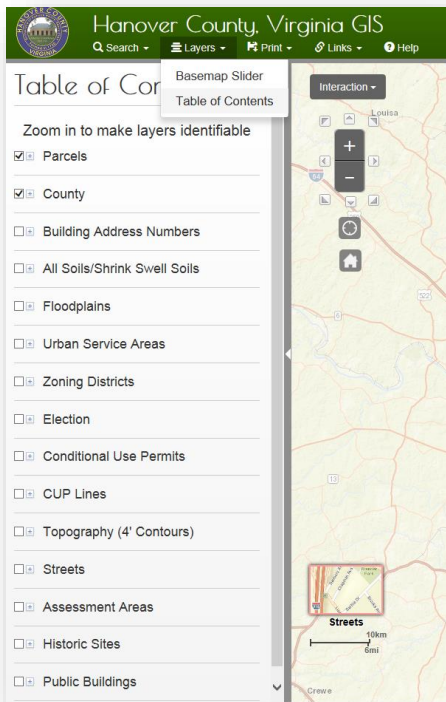


You can also search by area using the Spatial Search tool. Begin by selecting the Buffer Type and distance /units of measure and then choose Start Buffer to draw the area of interest.



Layers Tools

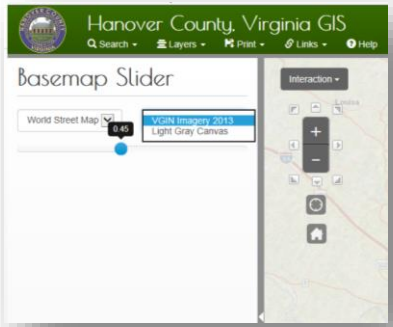
The Layers tools enable you to apply street map or aerial imagery to your map. Street map is the default selection. You may have the option to select from multiple versions of aerial imagery, depending on your interface and available data.



Base Maps

Base maps can be selected from the list of available aerial photos and street maps. Select the Basemap tool from the list of Layers (drop down). The gallery of basemaps will then be available for selection.

The Slider tool is available to transition between two different base maps.



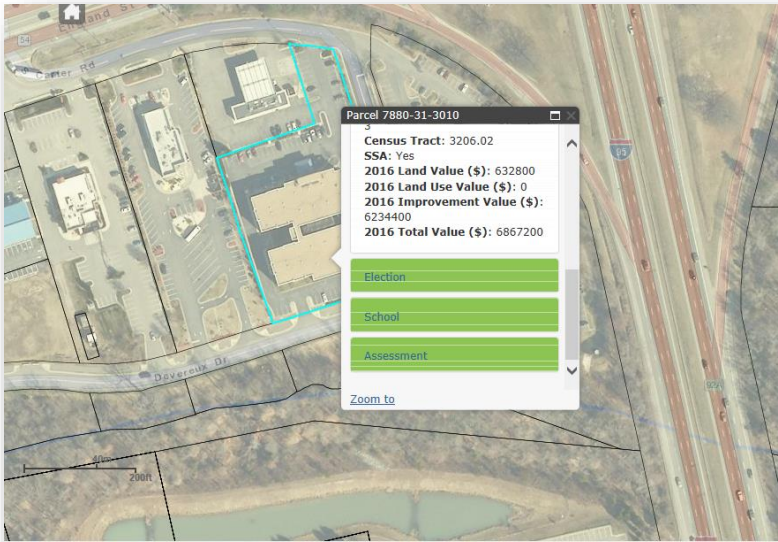
Map Tools

A set of map tools enables you to zoom in and out on the map, view previous and next map extents, and return the map to full extents.



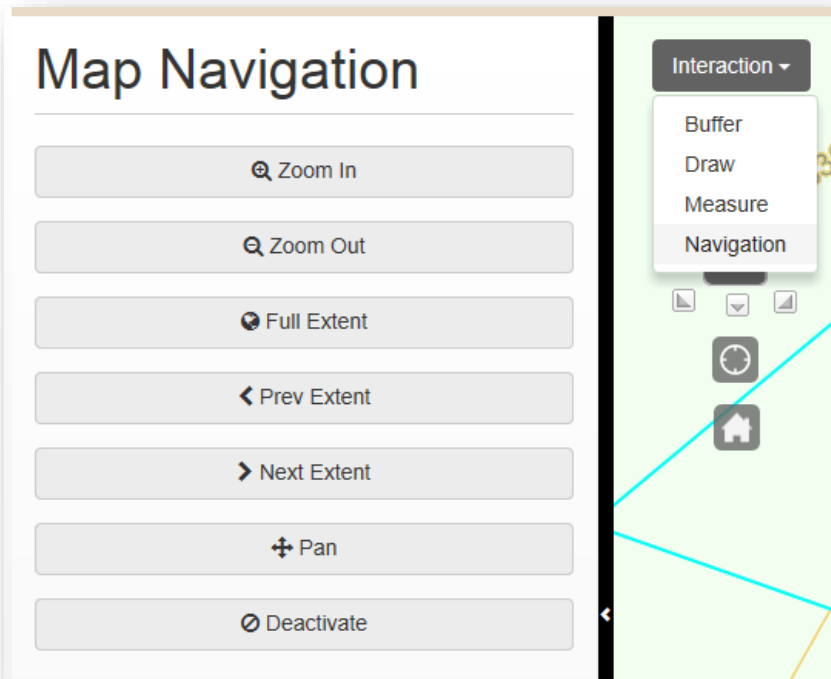
Active Desktop

Key application functionality is the active desktop. Clicking any location on the map will provide a pop-up of the features located and active layer (checked) in the Table of Contents (TOC). If more than one layer is detected, the information for each is made available with the arrow toggle.



Map Navigation Tools

The map area displays a map of your specific area of interest; for example, county, regional planning organization, or municipality. The map tools enable you to zoom in and out, pan the map, zoom to full extent, or view the previous or next map extents. Click on the button as needed to manipulate the map.

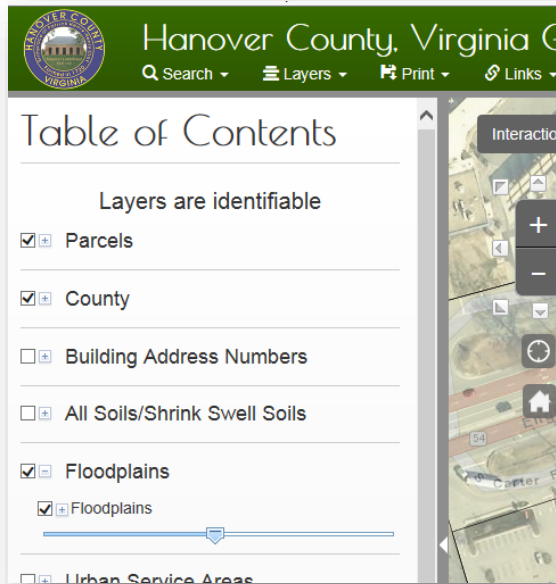


Adjusting Transparency

You can adjust the transparency of map layers or imagery you have applied to your map. Adjusting the transparency enables you to change the clarity of underlying map layers. The transparency option is available from Table of Contents for each feature.

To adjust transparency:

Click on the slider and move it left to increase transparency or right to decrease transparency of the imagery.

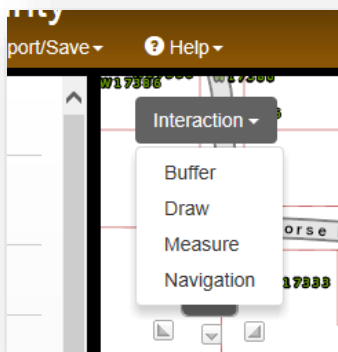


Basic Map Tools

The map tools located at the left side of the tool bar provide basic map manipulation and query options such as applying map layers, measuring distances, and printing your map.

These tools enable you to:

- [Buffer](#) features on your map
- [Measure distances](#) or areas on your map
- [Draw](#) graphics on the map



Measuring Distances

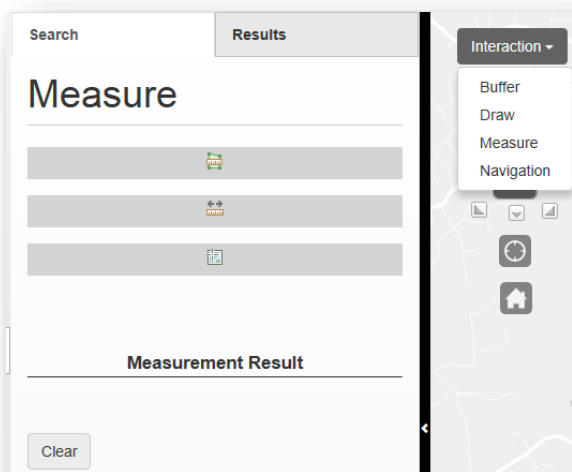
You can use the Measure tool to determine the distance between two points or find the distance along a path consisting of several points (Connect the Dot). The distance displays in Feet and/or Miles, depending on the current zoom level.

To measure distances:

Select **Measure** tool from the Interaction drop down toolbar. The *Measure* widget displays.

3. Do one of the following:

- **Measure a double or multi-point line**
 - a. Click **Connect the Dots**.
 - b. Click on the map at the point you want to start the measurement.
 - c. Click on the map where you want the next point of measurement.
 - d. Continue clicking additional points, if desired, until you have completed the linear measurement.
 - e. Double-click on the map at the last measurement point. The distance measurements display in the *Measure* widget.
- **Measure an area**
 - a. Click **Freehand**.
 - b. Click on the map at the point you want to start the measurement.
 - c. While holding down the left mouse button, drag the mouse to draw a border around the area you want to measure.
 - d. Release the mouse button when you have completed drawing the border. The distance measurements display in the *Measure* widget.



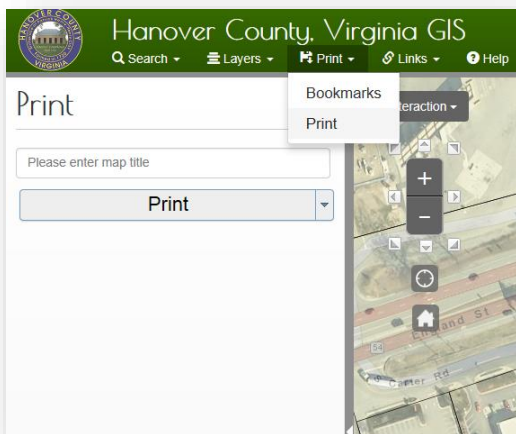
The Draw and Buffer tools operate in a similar method to the measure tools.

Printing a Map

The print functionality enables you to print a hard copy of any map to any personal or network printer to which you have access. You can also export maps to output to PNG or PDF formats. You can output to 8.5 x 11 or 11 x 17 inch portrait or landscape print sizes.

To print a map:

1. If needed, use the map tools to display the map area you want to print.
2. Select Export/Save dropdown choice for **Print** from the toolbar. The *Print* widget displays.
3. Click on the Main Title, select the text, and enter the title you want to use for the map, if desired.
4. Click page format from the dropdown choices.



Using Bookmarks

You can bookmark (save) a selected area on the map to quickly rebuild a map of that area in the future.

To use bookmarks:

1. Use the map tools, if needed, to display the map area you want to bookmark.
2. Select Export/Save drop down and **bookmark tool**.
3. Enter the name of the bookmark you would like to add.

